

PERMAFLEX™ II

SPECIALTY HARDWOOD SYSTEM

connorsports.com



CONNOR SPORTS
Where Champions Play™



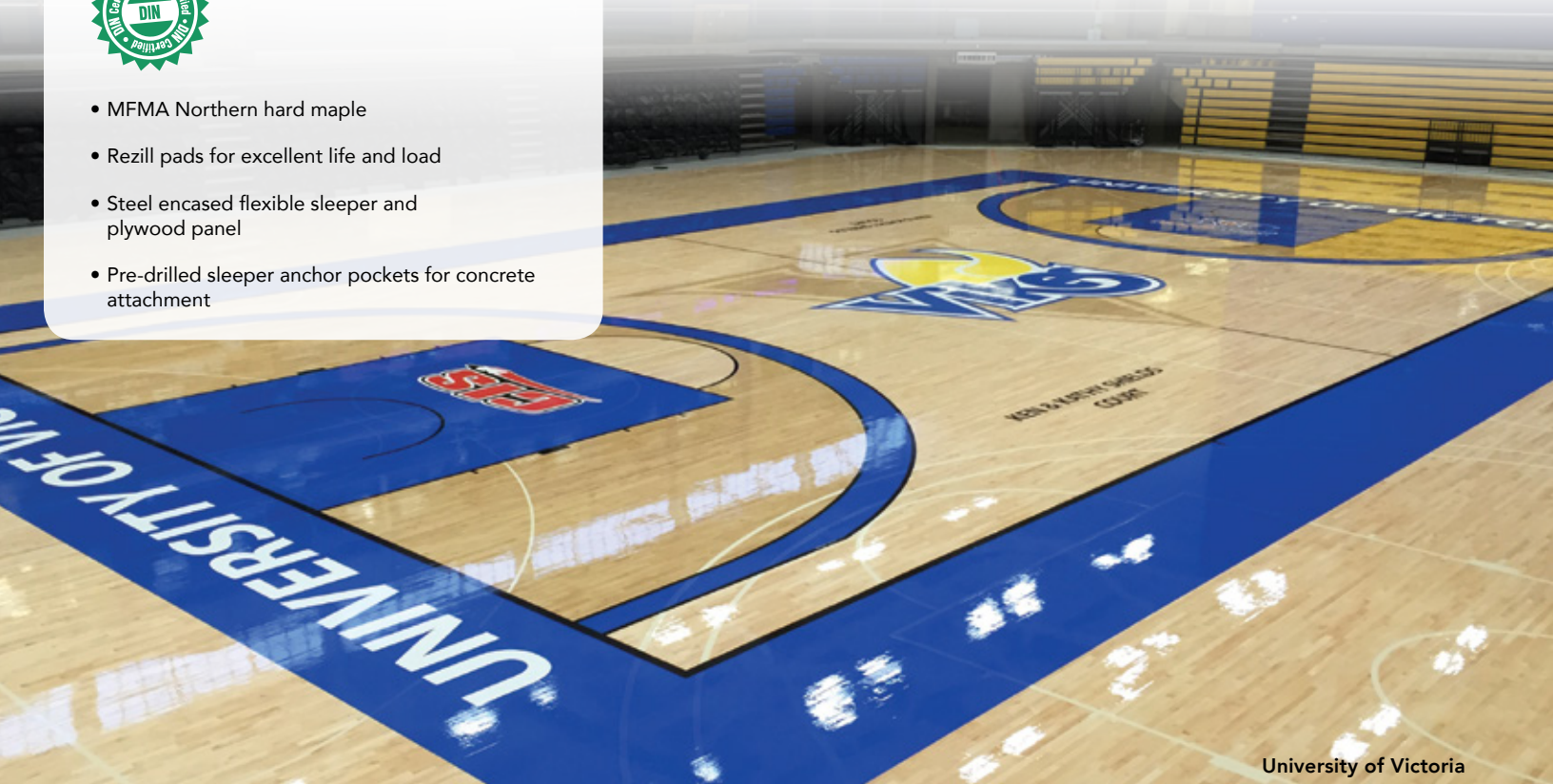
CONNOR SPORTS
Where Champions Play™

PERMAFLEX™ II SPECIALTY HARDWOOD SYSTEM

The combination of predrilled steel sleeper anchor pockets for simplified concrete anchoring and time-tested Rezill™ pads generate a high-performing subfloor that is both DIN & PUR compliant. A truss support option allows for profile height adjustment ideal for retrofit installations.

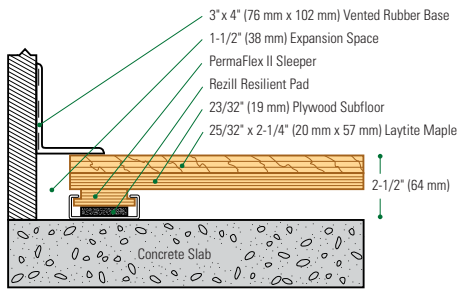


- MFMA Northern hard maple
- Rezill pads for excellent life and load
- Steel encased flexible sleeper and plywood panel
- Pre-drilled sleeper anchor pockets for concrete attachment

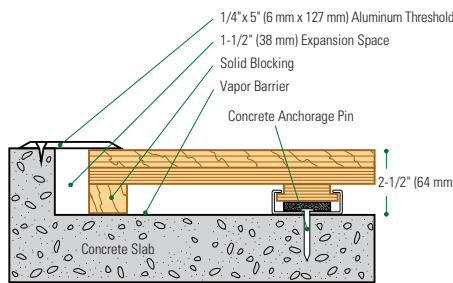


University of Victoria

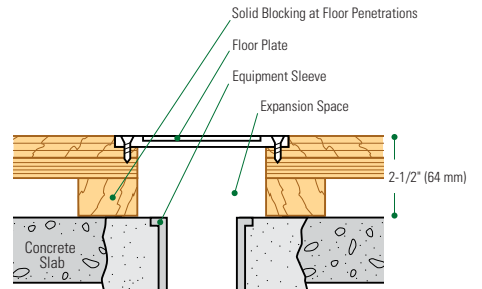
Wall Base Detail



Threshold Detail (Optional Accessory)



Equipment Detail (Optional Accessory)



Manufacturing:
ISO 14001:2004
CERTIFIED



Recycled Contribution:
Includes components with recycled content



Testing Laboratory:
United States Sports Surfacing Laboratory



Certified Testing:
ISS Scientific Body Membership



Green Status:
Managed Forests, Certification Available

Customer Service: 800.283.9522 | info@connorsports.com | connorsports.com/products

Where Champions Play™

