

SPOTLIGHT STAGE II

SPECIALTY STAGE & DANCE FLOORING SYSTEM

connorsports.com



CONNOR SPORTS
Where Champions Play™



CONNOR SPORTS
Where Champions Play™



- MFMA Northern hard maple
- Rezill pads for excellent life and load
- Steel encased flexible sleeper and plywood panel
- Pre-drilled sleeper anchor pockets for concrete attachment

SPOTLIGHT STAGE II

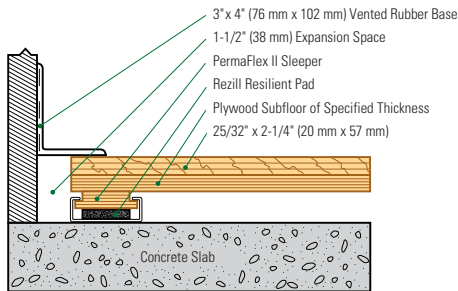
SPECIALTY STAGE & DANCE FLOORING SYSTEM

The combination of predrilled steel sleeper anchor pockets for simplified concrete anchoring and time-tested Rezill™ pads generate a high-performing subfloor that is ANSI E1.26 compliant. A truss support option allows for profile height adjustment ideal for retrofit installations.

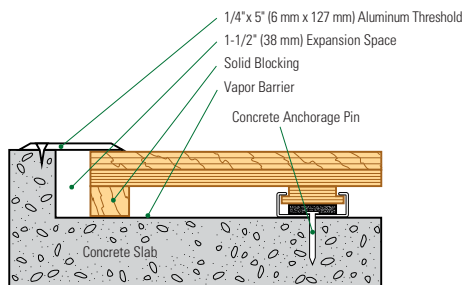


Liberty University School of Music

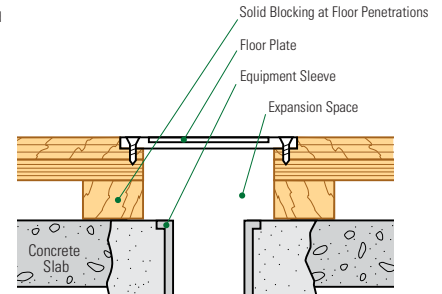
Wall Base Detail



Threshold Detail (Optional Accessory)



Equipment Detail (Optional Accessory)



Standard Profile Height: 2 1/2" (64 mm) Optional Profile Height: 2 3/4" (70 mm)

Manufacturing:
ISO 14001:2004
CERTIFIED



Recycled Contribution:
Includes components with recycled content



Testing Laboratory:
United States Sports Surfacing Laboratory



Certified Testing:
ISS Scientific Body Membership



Green Status:
Managed Forests, Certification Available

Customer Service: 800.283.9522 | info@connorsports.com | connorsports.com/products

Where Champions Play™

